

ENGLISH LANGUAGE PAPER 3 PART A

Question-Answer Book

GENERAL INSTRUCTIONS

- (1) There are two parts (A and B) in this paper. All candidates should attempt **ALL** tasks in Part A. In Part B, you should attempt either Part B1 (easier section) OR Part B2 (more difficult section). Candidates attempting Parts A and B2 will be able to attain the full range of levels, while Level 4 will be the highest level attainable for candidates attempting Parts A and B1.
- (2) Write your Candidate Number and stick barcode labels in the spaces provided on the appropriate pages of Part A Question-Answer Book and both Part B Question-Answer Books.
- (3) Write your answers clearly and neatly in the spaces provided in the Question-Answer Books. Answers written in the margins will not be marked. You are advised to use a pencil for Part A.
- (4) All listening materials will be played **ONCE** only.
- (5) Supplementary answer sheets will be supplied on request. Write your Candidate Number, mark the question number box and stick a barcode label on each sheet and fasten them with string **INSIDE** the Question-Answer Book.
- (6) The rough-work sheets provided are for you to take notes. They will be collected separately and will not be marked.
- (7) No extra time will be given to candidates for sticking on the barcode labels or filling in the question number boxes after the 'Time is up' announcement.
- (8) The two Question-Answer Books attempted by candidates (one for Part A and one for Part B) will be collected together at the end of the examination. Fasten the two Question-Answer Books together with the green tag provided.
- (9) The other unused Question-Answer Book for Part B will be collected separately at the end of the examination. This will not be marked. Do not write any answers in it.

Please stick the barcode label here.

Candidate Number																				
------------------	--	--	--	--	--	--	--	--	--	--	--	--	--	--	--	--	--	--	--	--



Please stick the barcode label here.

Part A

Situation

The Chau family is on holiday in London. You are going to listen to four recordings of the Chau family planning their holiday activities and visiting a museum.

In Part A, you will have a total of four tasks to do. Follow the instructions in the Question-Answer Book and in the recording to complete the tasks. You will find all the information you need in the Question-Answer Book and the recording. You now have two minutes to familiarize yourself with Tasks 1- 4.

Task 1 (15 marks)

The Chau family is searching on the internet and talking about things to do. Listen to their discussion and write the information in the spaces below. The first one has been provided as an example. You now have 30 seconds to study the task. At the end of the task, you will have one minute to tidy up your answers.

Name of Museum 1: The Video Games Museum

Example Video Game 1

Name: Tennis for two (example) year: 1958

Example Video Game 2

Name: (1) _____ year: (2) _____

Example Video Game 3

Name: (3) _____ year: (4) _____

Comments on visiting Museum 1:

Reason for not going: (5) _____

Name of Museum 2: (6) _____

What you do in the museum: (7) _____

Comments on visiting Museum 2:

Reason 1 for not going: (8) _____

Reason 2 for not going: (9) _____

Name of Museum 3: Museum of Youth Culture

Exhibitions Angela wants to see (circle yes or no):

Exhibition 1: (10) Toy ponies yes no

Exhibition 2: (11) Boy bands yes no

Exhibition 3: (12) Children's fashion yes no

Comments on visiting Museum 3:

Reason 1 for going: (13) _____

Reason 2 for going: (14) _____

Reason 3 for going: (15) _____

Answers written in the margins will not be marked.

Answers written in the margins will not be marked.

Answers written in the margins will not be marked.

END OF TASK 1

Please stick the barcode label here.

Task 2 (16 marks)

The Chau family are in the museum. They are talking about what they have just seen. Listen and fill in the missing information in the spaces below. The first one has been provided as an example. You now have 30 seconds to study the task. At the end of the task, you will have one minute to tidy up your answers.

Exhibition seen by Mr Chau and Angela: Teenagers and comics of the world (example)

Comics for girls

Country: (16) _____

Two main kinds of comics:

- (17) _____ e.g. (18) _____
- (19) _____ e.g. (20) _____

Comic books that Angela buys in Hong Kong



They are from a shop in (21) _____.

Reason for going there: (22) _____

They are about (23) _____

e.g. (24) _____

Exhibition seen by Mrs Chau: Best-selling toys from the past

Exhibits	Details
<p>Exhibit 1: Cabbage Patch Doll</p> 	<p>Popular in the (25) _____</p> <ul style="list-style-type: none">• Reasons for popularity: <p>(26) _____</p> <p>(27) _____</p>
<p>Exhibit 2: Space Hopper</p> 	<p>What it is: (28) _____</p> <p>What you do with it:</p> <p>(29) _____</p> <p>Two more things you can do with a Space Hopper:</p> <ul style="list-style-type: none">• (30) _____• (31) _____

Answers written in the margins will not be marked.

Answers written in the margins will not be marked.

Answers written in the margins will not be marked.

END OF TASK 2

Task 3 (16 marks)

The Chau family are looking at an exhibition in the museum called Young Inventors. A guide is showing them around this exhibition. Listen and fill in the missing information in the spaces below. The first one has been provided as an example. You now have 30 seconds to study the task. At the end of the task, you will have one and a half minutes to tidy up your answers.

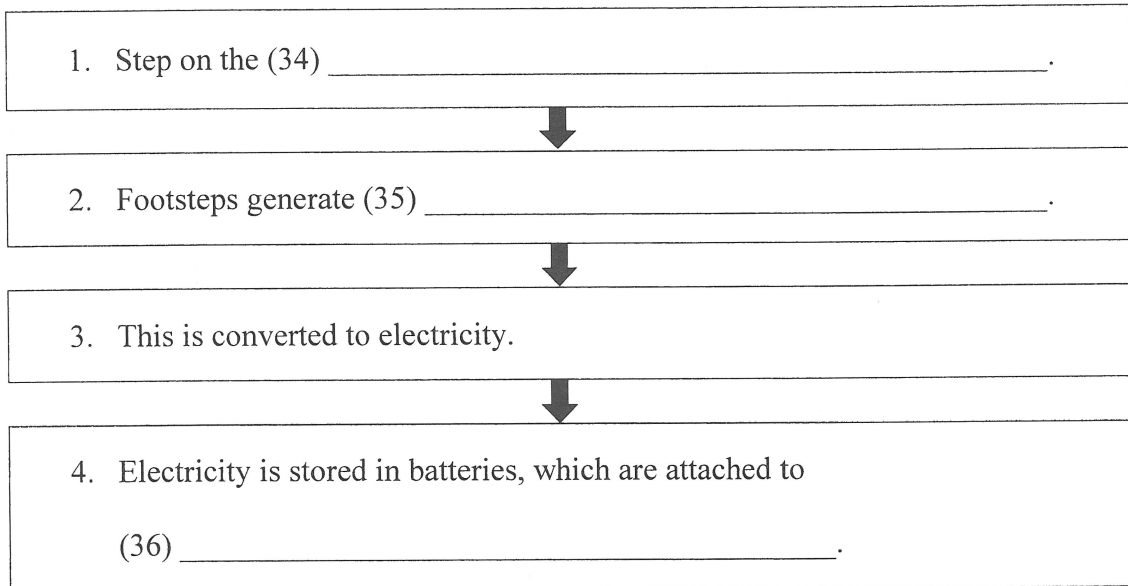
Invention 1: Shoe battery charger

- Name of inventor: Juan Domingo

Origin of the idea

- The inventor walks 5km to school every day (example).
- He realized that this is (32) _____.
- The average person takes (33) _____.

How the invention works



Examples of use

Ninety minutes of (37) _____ = fifteen minutes of electricity for

(38) _____.

Another application of the shoes: (39) _____.

(40) Who thinks the invention is useful? (tick the correct option or options below)

Note: You can tick one or more of the options

- A. Angela
- B. Mr Chau
- C. Mrs Chau

Answers written in the margins will not be marked.

Answers written in the margins will not be marked.

Answers written in the margins will not be marked.

Invention 2: Smelly Alarm Clock

- Name of inventor: Jean Paul Moncoeur

Origin of the idea

- His father (41) _____ the sound of an alarm clock
and so (42) _____.

Further details

- Smell that works best is (43) _____.
- The device (44) _____ towards the person who is sleeping.
- Most people wake up (45) _____ and
(46) _____.

(47) **Who likes the invention? (tick the correct option or options below)**

Note: You can tick one or more of the options

- A. Angela
- B. Mr Chau
- C. Mrs Chau

Answers written in the margins will not be marked.

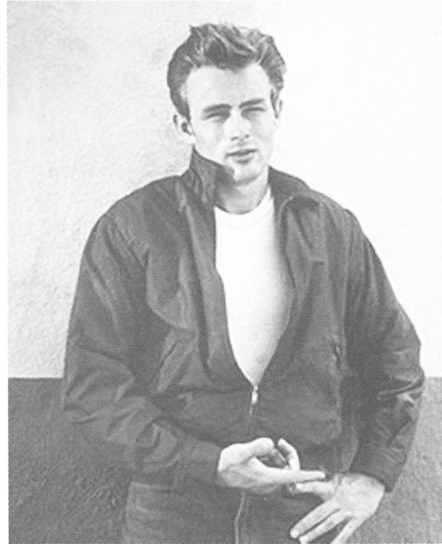
Answers written in the margins will not be marked.

Answers written in the margins will not be marked.

END OF TASK 3

Task 4 (11 marks)

The Chau family are attending a lecture given by David Stott about movie stars that are popular with young people. Listen to the lecture and answer the questions below. Please note you do not need to answer in complete sentences. The first one has been provided as an example. You now have 30 seconds to study the task. At the end of the task, you will have two minutes to tidy up your answers.



James Dean

If people have not seen a James Dean movie, in what **three** ways might people recognize him?

From a work of art (example)

(48)

(49)

Give **two** reasons why he is still so famous.

(50)

(51)

Why was he fired from his job as a stunt tester?

(52)

Answers written in the margins will not be marked.

Answers written in the margins will not be marked.

Answers written in the margins will not be marked.

Answers written in the margins will not be marked.

What was special about the movie *Rebel Without a Cause*?

(53)

Before *Rebel Without a Cause*, what kind of roles did young people have in movies?

(54)

What was the purpose of having young people in movies before *Rebel Without a Cause*?

(55)

What **three** effects did *Rebel Without a Cause* have on the movie industry?

(56)

(57)

(58)

Answers written in the margins will not be marked.

Answers written in the margins will not be marked.

END OF TASK 4

End of Part A

Now go on to Part B

Sources of materials used in this paper will be acknowledged in the *Examination Report and Question Papers* published by the Hong Kong Examinations and Assessment Authority at a later stage.

HONG KONG EXAMINATIONS AND ASSESSMENT AUTHORITY
HONG KONG DIPLOMA OF SECONDARY EDUCATION EXAMINATION 2016

ENGLISH LANGUAGE PAPER 3

PART B1

DATA FILE

GENERAL INSTRUCTIONS

- (1) Refer to the General Instructions on Page 1 of the Question-Answer Book for Part A.

INSTRUCTIONS FOR PART B1

- (1) The Question-Answer Book for Part B1 is inserted into this Data File.
- (2) For Part B, attempt **EITHER** those tasks in Part B1 (Tasks 5 – 7) **OR** those in Part B2 (Tasks 8 – 10).
- (3) You are advised to use a pen for Part B.
- (4) The Data Files will **NOT** be collected at the end of the examination. Do **NOT** write your answers in the Data Files.
- (5) Hand in only **ONE** Question-Answer Book for Part B, either B1 or B2, and tie it with the Question-Answer Book for Part A.

Part B

Situation

You are Indy Wong. You are a museum assistant for Lara Gau at the Hong Kong Social History Museum. Lara has a few things she wants you to do to help out.

You will listen to an interview between Patty Leung and Dr Jack Jones for the podcast *Nosing Around*.

Before the recording is played, you will have five minutes to study the Question-Answer Book and the Data File to familiarize yourself with the situation and the tasks.

Complete the tasks by following the instructions in the Question-Answer Book and on the recording. You will find all the information you need in the Question-Answer Book, the Data File and on the recording. As you listen you can make notes on page 3 of the Data File.

You now have five minutes to familiarize yourself with the Question-Answer Book and the Data File.

Contents

	Page
1. Listening note-taking sheet for podcast <i>Nosing Around</i>	3
2. Email from Lara Gau to Indy Wong	4
3. Article from <i>The Hong Kong Review</i>	5
4. Minutes from museum staff meeting	6
5. Email exchange between Limahl Howard and Lara Gau	7
6. Question Wizard online survey results of museum visitors	8
7. Lok and Partners' interim report	8
8. Museum Staff Manual	9
9. Part-time student assistants' feedback from summer 2015	9

Listening note-taking sheet for podcast *Nosing Around*

Social History Museum (and directions)

Wang Chung Traditional Farmhouse and Village

Dr Jones' Talk

Chang Yee Tak Plough

Email from Lara Gau to Indy Wong

To: Indy Wong
From: Lara Gau
Subject: Things to do

Sent: Fri 8 April 2016 3:14 AM

Hi Indy

How are things in Hong Kong? Mexico is great! I'll tell you all about it when I get back. While I am away, I've got three things I need you to do.

The first thing I want you to do is complete the 1980s Exhibition flyer. You might want to look at the Hong Kong Review and the minutes of the staff meeting as well as your notes from the podcast. Note that we got positive feedback in The Hong Kong Review so you should be able to find another quote from there to put at the top of the flyer (4 words).

Secondly, you need to write the progress report for Dr Jones on the new museum café. Include the following information: the new name for the café, full details about the new location of the café, what work has been completed so far, including the children's play area outside the café. I'll forward you my emails with Mr Howard about this. You might want to look at the minutes of the last meeting as well as the QuestionWizard results and Mr Lok's interim report.

Finally, can you write a letter to Ms Pollitti, the Careers Mistress at St Scritti's School, and tell her about the part-time student assistant positions. We want to attract pupils from this excellent school. You will need to explain what a social history museum is as well as outline the details of the position. See also the minutes of the last meeting and the relevant page in the staff manual to help you. You should include positive feedback from previous student assistants to show why it will be a good experience.

Lara

How we used to live in the 80s: The Hong Kong Social History Museum

Well, my immediate reaction when my editor told me to review a museum rather than my usual restaurant reviews was ‘Oh no! Not a boring old museum!’ But I had never been to the new Hong Kong Social History Museum, so I tried to keep an open mind....

The best part for me at the museum was the “Household of the 80s”. There are lots of rooms you can walk around and you get to try out different things. My favourite room was the “TV lounge”. I got to watch TV. Some old TV programmes I remembered watching when I was a kid. I also really enjoyed playing around on an old “Spectrum” computer and seeing if I could top my high scores on some old games.

Another great thing about the Social History Museum is that it is really close to South Point MTR.

Overall, I have to say this was an excellent day out.

Rating: * * * * ½

Minutes from museum staff meeting

Staff meeting of the Hong Kong Social History Museum

Date: Tues. April 5, 2016

Venue: Museum Seminar Room 2

Chairperson: Dr Jack Jones, Director

In Attendance: Limahl Howard, Building Management Director
Lara Gau, Public Relations and Retail
Xu Xinpeng, Facilities

Secretary: Cindy Lau

Minutes of Meeting

- Response to “How we used to live in the 1980s” Exhibition

Dr Jones was pleased to announce that the exhibition has been very successful so far. The reviews in the newspapers have been very positive, especially about the household of the 1980s. Visitor feedback showed that the bathroom was the most popular room. People reported enjoying smelling the soaps and tasting the toothpaste as top highlights.

- Update on the museum café

Dr Jones was very concerned that Lara had not yet completed a progress report about the new café before leaving for Mexico. Lara said the final report would be completed by Indy.

She informed the meeting that Minton’s had finished making the tables and chairs and that the expected delivery date was April 27. She added that Mr Lok, the builders, had promised to send an interim report later that day.

- Part-time student assistants

Dr Jones has agreed to the request to hire three part-time assistants this year. They will work four days a week from July to August.

Limahl enquired whether they would help on a daily basis in the café. The meeting rejected this idea but agreed for them to assist when it is very busy.

It was agreed to increase the hourly rate to \$38.

- Update on talk

Dr Jones confirmed that he would give a talk at the museum. Exact date and time to be confirmed. He added that the talk would be about the changes in the traditional way of life on farms in the New Territories since the 1980s.

Email exchange between Limahl Howard and Lara Gau

To: Lara Gau
From: Limahl Howard
Subject: Re: Progress Report

Sent: Fri 1 April 2016 11:33 AM

Lara

You can view the online results about the vote on the new café name and children's play area facilities at Question Wizard: <http://questionwizard.com/hkmuscafe/Quodsusg>

The downside of the change of venue is the space. So we can only have the two most popular play area facilities.

Limahl

To: Limahl Howard
From: Lara Gau
Subject: Re: Progress Report

Sent: Thurs 31 March 2016 10:47 AM

Dear Limahl

Thanks. Another thing I mentioned on the phone was I need to know what the voters decided about the facilities for the kids' play area and what they chose for the new name for the café.

Lara

To: Lara Gau
From: Limahl Howard
Subject: Progress Report

Sent: Thurs 31 March 2016 10:26 AM

Hi Lara

Here's the information about the building work you requested on the phone just now. The main thing I suppose is that the café won't be on the ground floor. As you will remember, the safety report said the ground floor's too close to the road – and dangerous for children. Plus, there's just too much air pollution from the traffic. Oh and the noise (from the traffic). So that's why it was decided that it's going to go on the museum rooftop instead.

Limahl

Question Wizard online survey results of museum visitors

Suggested names	No. of votes	Suggested play area facilities	No. of votes
The Rubik Cubical	234	Slides	234
Spandau Café	567	Kids' climbing wall	576
Café at the End of the Universe	123	Witch's hat	144
Snack Man	234	Swings	786
Foodloose	45	Roundabout	55

Lok and Partners' interim report

To: Lara Gau Sent: Tues 5 April 2016 4:33 PM
 From: Lok and Partners
 Subject: Interim Report on HK Social History Museum work

Dear Ms Gau

See the interim report below on the building work at the museum as requested:

Description	Level of completion	Estimated date of completion	Notes
The café dining area	Completed	n/a	n/a
The café kitchen	70%	16/04	n/a
Gift shop windows	15%	28/04	Glass on order. Delivery date tbc
Children's play area	0%	30/04	Start date: after completion of kitchen

Please contact me on WhatsApp on 9654376 if you have any enquiries.

Regards

Jimmie Lok
 Lok and Partners Ltd

Section 4.5: Part-time Student Assistant Staff

4.5.1 Main Duties

Part-time assistants are permitted to do the following:

- assist visitors
- clean display items (after training)

4.5.2 Working Hours

Assistants must not work more than 4 hours per day on any day.

Part-time student assistants' feedback from summer 2015

- (1) Thinking back on what happened while I worked there I feel teamwork was what I really developed in.
- (2) It was okay at times. A bit boring though.
- (3) The pay was terrible but having said that as a communicator I'm so much better than I was before.

THIS IS THE LAST PAGE OF THE PART B1 DATA FILE

Sources of materials used in this paper will be acknowledged in the *Examination Report and Question Papers* published by the Hong Kong Examinations and Assessment Authority at a later stage.

HONG KONG EXAMINATIONS AND ASSESSMENT AUTHORITY
HONG KONG DIPLOMA OF SECONDARY EDUCATION EXAMINATION 2016

ENGLISH LANGUAGE PAPER 3

PART B2

DATA FILE

GENERAL INSTRUCTIONS

- (1) Refer to the General Instructions on Page 1 of the Question-Answer Book for Part A.

INSTRUCTIONS FOR PART B2

- (1) The Question-Answer Book for Part B2 is inserted into this Data File.
- (2) For Part B, attempt **EITHER** those tasks in Part B1 (Tasks 5 – 7) **OR** those in Part B2 (Tasks 8 – 10).
- (3) You are advised to use a pen for Part B.
- (4) The Data Files will **NOT** be collected at the end of the examination. Do **NOT** write your answers in the Data Files.
- (5) Hand in only **ONE** Question-Answer Book for Part B, either B1 or B2, and tie it with the Question-Answer Book for Part A.

Part B

Situation

You are Indy Wong. You are a museum assistant for Lara Gau at the Hong Kong Social History Museum. Lara has a few things she wants you to do to help out.

You will listen to an interview between Patty Leung and Dr Jack Jones for the podcast *Nosing Around*.

Before the recording is played, you will have five minutes to study the Question-Answer Book and the Data File to familiarize yourself with the situation and the tasks.

Complete the tasks by following the instructions in the Question-Answer Book and on the recording. You will find all the information you need in the Question-Answer Book, the Data File and on the recording. As you listen you can make notes on page 3 of the Data File.

You now have five minutes to familiarize yourself with the Question-Answer Book and the Data File.

Contents

	Page
1. Listening note-taking sheet for podcast <i>Nosing Around</i>	3
2. Email from Lara Gau to Indy Wong	4
3. Staff manual on borrowing of items	4
4. Minutes from museum staff meeting	5
5. Email from Ip Lai Ping from the Shun Yee Tak Village Hall	6
6. WhatsApp messages from the Social History Museum group	7
7. Transcript of interview with Wang Chung Village resident	8
8. Article from <i>Hong Kong News</i> August 30, 1983	9
9. Question Wizard online survey results of museum visitors	9
10. Email from Ms O'Conner	10

Social History Museum (and directions)

Wang Chung Traditional Farmhouse and Village

Dr Jones' Talk

Chang Yee Tak Plough

Email from Lara Gau to Indy Wong

To: Indy Wong
From: Lara Gau
Subject: Things to do

Sent: Fri 8 April 2016 3:14 AM

Hi Indy

How are things in Hong Kong? Mexico is great! I'll tell you all about it when I get back. While I am away, I've got three things I need you to do.

I need you to write an email to reply to Ms Ip about our museum borrowing the Chang Yee Tak Plough. Have a look at her email and respond to her questions. It would also be great if we could photograph the plough – I want to put a photo of it on our new museum posters. Could you ask her?

We are working on the museum website. Please write a description for the website to introduce the traditional farmhouse from Wang Chung Village. Mention how the farmhouse was found and include some interesting facts about Wang Chung Village. Include a brief summary of the amazing story of the kitchen cupboard, which is in the farmhouse. People will love that story. Dr Jones said he would send a WhatsApp to give you some ideas.

I need you to write the main section of a report to the Museum Board, which covers the problems the museum has been having and the recommendations we would like to suggest. Please mention incidents which illustrate these problems. Start by looking at the email from Ms O'Conner and the minutes of the recent staff meeting. Since this report will be kept for official records it must be written in paragraph form.

Lara

Staff manual on borrowing of items

Section 3.2: Care of borrowed items

3.2.1 Displaying valuable borrowed items

All borrowed items must be displayed with some kind of cover. This is to protect the museum from being blamed for damage to items that may be caused by visitors touching or handling items without permission.

3.2.2 Transport

Movers with no experience or who are not trained in handling borrowed items must NOT be hired. Costs for the delivery and return of the item will be paid for by the museum.

3.2.3 Items requiring special security

Items which are on special loan and which will not be displayed in the museum display rooms must be stored in the large underground storage facility in the basement and must be securely stored under lock and key.

3.2.4 Insurance

All borrowed items must be insured by the museum prior to the finalisation of the transportation arrangements. Insurance will pay for any damage during the transport and display of the item.

Minutes from museum staff meeting

Staff meeting of the Hong Kong Social History Museum

Date: Tues. April 5, 2016
Venue: Museum Seminar Room 2
Chairperson: Dr Jack Jones, Director
Members: Limahl Howard, Building Management Director
Lara Gau, Public Relations and Retail
Secretary: Cindy Lau

Minutes of meeting

Ms Gau said that she was still trying to obtain permission to borrow the Chang Yee Tak Plough and would be replying to an email about the loan. She asked for suggestions on how to reassure the lenders.

Dr Jones reminded Ms Gau that according to policy a glass cover must be placed over the plough and he suggested that a security guard should be permanently stationed by the plough. He added that this might persuade the lenders.

Ms Gau agreed that the glass cover had to be used but rejected the suggestion of a security guard. The other committee members agreed. She also asked whether full-time staff could be trained in the handling of valuable items in time for the plough's arrival if consent from the lenders was given.

All committee members agreed to this proposal. It was also confirmed that all staff would be trained before the exhibition.

Dr Jones told Ms Gau and Mr Howard that the Museum Board were concerned about a number of incidents that had occurred recently at the museum and that the Board had requested a report. Dr Jones asked Ms Gau and Mr Howard to express their views on this matter.

Mr Howard voiced concerns about recent problems the museum has had with some visitors. According to a report from Mr Chow, the Senior Cleaning Officer, yesterday during the public holiday, 13 visitors were caught smoking in the toilets at different times.

Ms Gau asked whether the evacuation of the building yesterday afternoon was connected in any way to this.

Mr Howard concurred that this certainly had been the cause of the fire alarm being triggered.

Dr Jones mentioned a complaint received from the Committee for HK International Primary Schools. He recommended that in response to the complaint all members of staff should be ready to assist school groups at all times during their visit.

Ms Gau and Mr Howard agreed but pointed out that only full-time staff would be able to assist as part-time staff may finish their shift before the end of a given school group's visit. Ms Gau added that part-time staff could help by making worksheets for school groups. Dr Jones agreed with the implementation of these points.

Mr Howard also referred the committee to the results of the online survey recently carried out in relation to points raised by the complainant.

Meeting ended 2:55pm.

Email from Ip Lai Ping from the Shun Yee Tak Village Hall

To: Lara Gau
From: Ip Lai Ping
Subject: Chang Yee Tak Plough

Sent: Fri 1 April 2016 11:36 AM

Dear Ms Gau

Thank you for your email requesting to borrow the Chang Yee Tak Plough. Before we can agree to your request, we need to find out more information from you.

Firstly, can you clarify why it is that you want to borrow the Chang Yee Tak Plough in particular?

Secondly, we need to check that the plough will be safe during its time there and what would happen if it was damaged or broken in any way. We are also concerned about its transportation (e.g. costs, experience of the movers).

I look forward to reading your reply on this matter.

Yours sincerely

Ms Ip Lai Ping
Head of Shun Yee Tak Village Hall
Shun Yee Tak
New Territories
Hong Kong

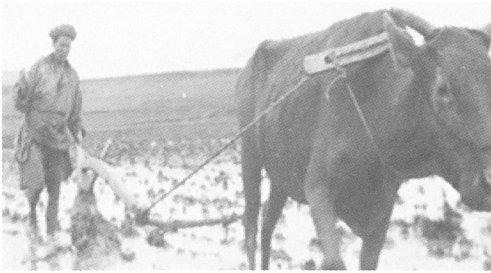
WhatsApp messages from the Social History Museum group

Dr Jack Jones

Lara told me to post some quick notes about Wang Chung Village: the farmhouse and the flood etc. Wang Chung Village / Reservoir – reservoir water levels at historic low → found farmhouse. The 1983 flood story: kitchen cupboard – 1983 – strange writing on left door. I interviewed somebody from the village who knew the story. A Mrs Wang. Here's the link to the transcript of the interview: <https://hkshm.org/researchproject14>. She talks about the village as well.

8:08 AM

Dr Jack Jones



8:10 AM

Dr Jack Jones

This is a photo I got of a traditional Chinese plough. It's actually the woman I interviewed's father in the photo.

8:12 AM

Lara Gau

Changing the subject, I was thinking about the report about the smoking problems in the toilet. I was thinking, how about when the person opens the toilet door → play 'no smoking' announcement?

9:27AM

Dr Jack Jones

I like it. Yes! 👍 👍

9:57AM

Transcript of interview with Wang Chung Village resident

Social History Museum
File Edit View Go Bookmarks Tools Help
<https://hkshm.org/researchproject14> Go

Dr Jones: Wang Chung Village was such a famous village. I have also heard many things about its pearl rice. Can you tell me any more about this?

Mrs Wang: Well, I remember my father would have buyers for this rice from all over China. But it wasn't just him. All the farmers in our village did this. Our rice was in huge demand then, you know. Pearl rice was not cheap. It was a luxury even for rich families.

Dr Jones: Sadly, of course, we can't see the village anymore, but can you describe what it was like?

Mrs Wang: Ah well, our village was so beautiful. Tourists from the city would come at the weekend to see the rice fields.

Dr Jones: Yes, the "S"-shaped fields. I've some photos of them. Truly beautiful.

Mrs Wang: I remember the great flood of Wang Chung Village, you know.

Dr Jones: Really? Typhoon Ellen in 1983?

Mrs Wang: I think so. The two girls who survived on the kitchen cupboard? I knew them. Good little girls. Very pious. Their mother told me about what happened.

Dr Jones: Did she tell you about the markings on the cupboard door?

Mrs Wang: Yes. A prayer, a prayer to Guanyin.

Dr Jones: Well, I'll be. The Goddess of Mercy. They carved it on the right door of the cupboard?

Mrs Wang: No, she told me it was the left. They carved it when they were waiting to be rescued.

Dr Jones: Oh really? My mistake then. Now, after 1990 you moved to your present home in Fanling. Was that a big change?

Mrs Wang: Well, of course there were some things from before that I missed a lot. Especially to begin with. The first few years I found it quite difficult to adapt to city life. But Fanling is a lovely place. There's so much I can do here. I'm a member of the residents' association on the estate. I am really involved in that and I like helping others on the estate. You might not believe it but I'm 79 this year. But there are others younger than me that need help so I do all I can. And in the end it's family and friends that are important and I'm lucky. I have 14 grandchildren and one great granddaughter. I had family and friends in Wang Chung and still have them now I'm in Fanling.

[Recording ends]

Living on a prayer

By Jovi Bon

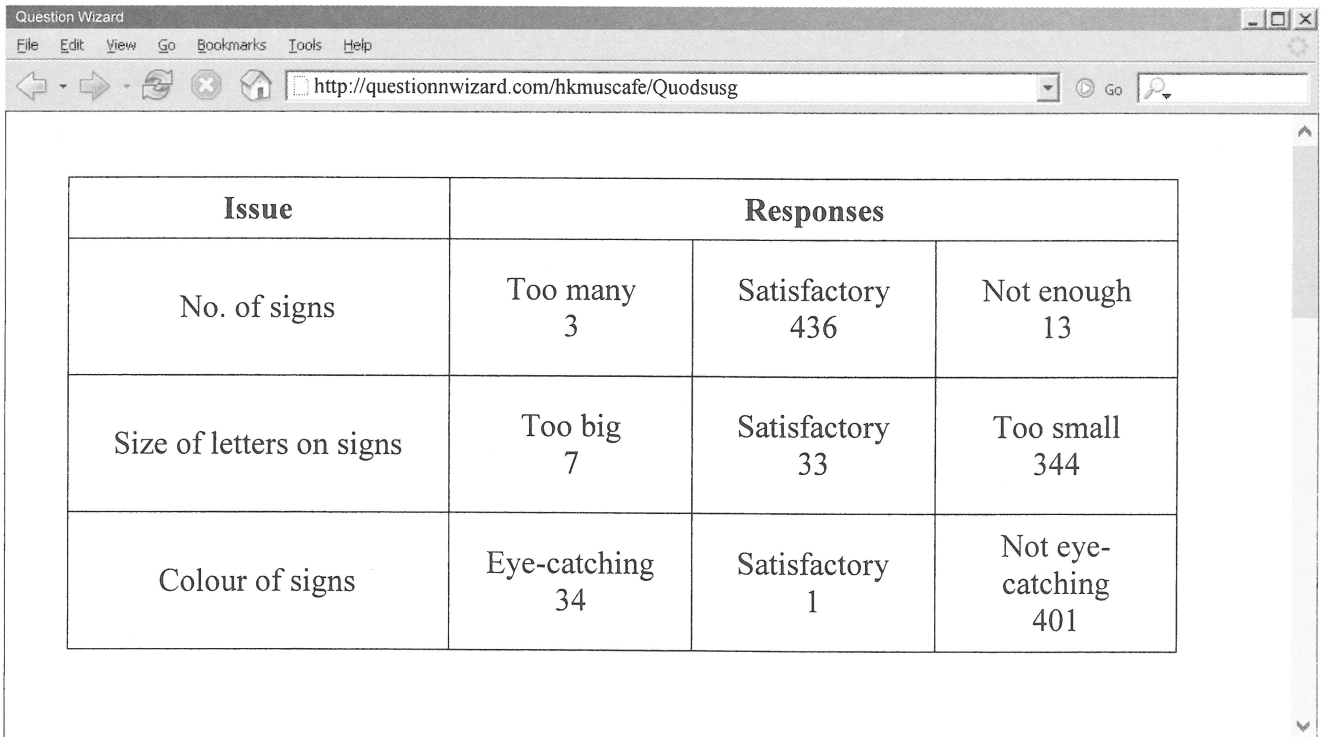
30th August 1983

The death and destruction brought by Typhoon Ellen had a happy twist in its tornado's tale yesterday when two young sisters were miraculously found alive after fears the pair had drowned. Man Yee (7) and Man Ching (9) Lee were found clinging to the family's kitchen cupboard as it floated in flood waters. They had survived for two days on the wooden cupboard while waiting for help after their home had been struck by a flash flood.

"They asked Guanyin to save them and she answered their prayers," Mrs Lee, mother of the two girls, said.

The two girls were reunited with their mother and father last night after rescuers found them in a flooded rice field near a farm in the far north-west of the New Territories.

Question Wizard online survey results of museum visitors



Issue	Responses		
	No. of signs	Too many 3	Satisfactory 436
Size of letters on signs	Too big 7	Satisfactory 33	Too small 344
Colour of signs	Eye-catching 34	Satisfactory 1	Not eye-catching 401

Email from Ms O'Conner

To: Jack Jones
From: S. O'Conner
Subject: School visits to the Social History Museum

Sent: Sat 2 April 2016 8:46 AM

Dear Dr Jones

I am writing on behalf of The Committee for Hong Kong International Primary Schools to make known to you the concerns we have about school visits to the Social History Museum.

First, I would like to draw your attention to concerns I have about how safe your museum is for children. I refer to something that happened on our visit when a girl from our school fell off your large plastic ox and broke her arm. The fault lies with your museum. Frankly speaking, the exhibits are too boring for the average primary school student. You should at least consider having some exhibits that children can interact with safely. Don't you think there should be more museum staff to help out our teachers?

I have also been told by other members of the committee that the signage in the museum is inadequate. On our visit, because of this, one group of our teachers and students found themselves lost in the basement of your museum at closing time. I suggest you look into the matter.

We hope that you can address these points at some point soon or at least respond to the concerns of our committee. Remember these children are the potential adult visitors that will ensure your museum's future.

I look forward to your prompt reply.

Yours sincerely

Ms O'Conner
Headmistress of St. Sinead's Girls School
Chair of the Committee for Hong Kong International Primary Schools

THIS IS THE LAST PAGE OF THE PART B2 DATA FILE

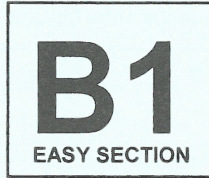
Sources of materials used in this paper will be acknowledged in the *Examination Report and Question Papers* published by the Hong Kong Examinations and Assessment Authority at a later stage.

Candidate Number

--	--	--	--	--	--	--	--	--	--	--	--	--	--	--	--	--	--	--	--

Please stick the barcode label here.

**HKDSE 2016
ENGLISH LANGUAGE
PAPER 3 PART B1
Question-Answer Book**



Task 5: Exhibition flyer (18 marks)

Complete the 1980s Exhibition flyer below using information from the B1 Data File and your notes.

The Hong Kong Social History Museum Presents: How we used to live in the 1980s

Come and experience how people lived in the 1980s in our exciting new exhibition!

“A wonderful experience” – Hong Kong Times

“ _____ ” — _____

TALKS

Title:

Speaker:

Contents of Talk:

Date & Time:

HOUSEHOLD OF THE 1980s

- **Room #1: The bedroom.**
- Activities: Admire posters, listen to some 80s pop music like “Hot Topic” and “Lena Nutshell” and read classic story books and comics.

• Room #2: _____

• Activities: _____

• Room #3: _____

• Activities: _____

Directions for getting to the museum from the new MTR station

Answers written in the margins will not be marked.

Answers written in the margins will not be marked.

Answers written in the margins will not be marked.

END OF TASK 5



Task 6: Progress report (18 marks)

Write a progress report on the new museum café using information from the B1 Data File. Write around 120 words.

5

10

15

20

25

Answers written in the margins will not be marked.

Answers written in the margins will not be marked.

Answers written in the margins will not be marked.

Answers written in the margins will not be marked.

30

35

END OF TASK 6

Task 7: Letter (18 marks)

Write a letter to the Careers Mistress at St. Scritti's School using information from the Data File and your notes. There is no need to write the address or date. Write around 150 words.

5

10

Answers written in the margins will not be marked.

Answers written in the margins will not be marked.

Answers written in the margins will not be marked.

15

20

25

30

35

40

Answers written in the margins will not be marked.

Answers written in the margins will not be marked.

END OF TASK 7
END OF PART B1

Answers written in the margins will not be marked.

25

30

35

40

45

Answers written in the margins will not be marked.

Answers written in the margins will not be marked.

END OF TASK 8

Please stick the barcode label here.

Task 9: Introduction to Wang Chung traditional farmhouse and village (18 marks)

Write an introduction to Wang Chung traditional farmhouse and village for the museum website using information from the B2 Data File and your notes. Write around 150 words.

5

10

15

20

Answers written in the margins will not be marked.

Answers written in the margins will not be marked.

Answers written in the margins will not be marked.

Answers written in the margins will not be marked.

25

30

35

40

45

50

Answers written in the margins will not be marked.

Answers written in the margins will not be marked.

END OF TASK 9

Task 10: Report to Museum Board (18 marks)

Write the main section of the report to the Museum Board using information from the B2 Data File. Write around 200 words.

5

10

15

20

25

Answers written in the margins will not be marked.

Answers written in the margins will not be marked.

Answers written in the margins will not be marked.

Answers written in the margins will not be marked.

30

35

40

45

50

55

Answers written in the margins will not be marked.

Answers written in the margins will not be marked.

END OF TASK 10

END OF PART B2