

CHEMISTRY PAPER 2

11:45 am – 12:45 pm (1 hour)

This paper must be answered in English

INSTRUCTIONS

- (1) This paper consists of **THREE** sections, Section A, Section B and Section C. Attempt **ALL** questions in any **TWO** sections.
- (2) Write your answers in the **DSE(D)** Answer Book provided. Start each question (not part of a question) on a new page.
- (3) A Periodic Table is printed on page 8 of this Question Paper. Atomic numbers and relative atomic masses of elements can be obtained from the Periodic Table.

Section A Industrial Chemistry

Answer ALL parts of the question.

1. (a) Answer the following short questions :

(i) Explain why the Haber process significantly contributes to crop yield increase. (1 mark)

(ii) (1) Write the chemical equation for the formation of syngas from methane.

(2) Syngas can be obtained from the conversion of biomass. Suggest why it is considered as an advancement of the methanol production technology. (2 marks)

(iii) Three trials of an experiment were performed under the same experimental conditions to study the kinetics of the following reaction :



The table below shows the data obtained :

Trial	Initial concentration of A(aq) / mol dm ⁻³	Initial concentration of B(aq) / mol dm ⁻³	Initial rate of formation of D(aq) / mol dm ⁻³ s ⁻¹
1	0.0836	0.202	0.26×10^{-4}
2	0.0836	0.404	1.04×10^{-4}
3	0.0418	0.404	0.52×10^{-4}

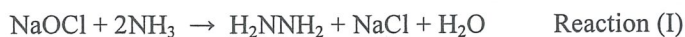
Deduce the order of reaction with respect to A(aq) and that with respect to B(aq). (2 marks)

(b) A chloroalkaline chemical plant uses membrane electrolytic cells to produce hydrogen, chlorine and sodium hydroxide.

(i) With the help of chemical equations, briefly describe how hydrogen, chlorine and sodium hydroxide are produced in a membrane electrolytic cell. (4 marks)

(ii) Sodium hypochlorite (NaOCl) can be made from the products obtained in the membrane electrolytic cell. Write a chemical equation for its formation. (1 mark)

(iii) By using NaOCl, this chemical plant can produce hydrazine (H₂NNH₂), a propellant used in space vehicles :



However, instead of using NaOCl, H₂O₂ can also be used to produce hydrazine :



By calculating the respective atom economy of Reaction (I) and Reaction (II), compare which of them can be considered as greener.

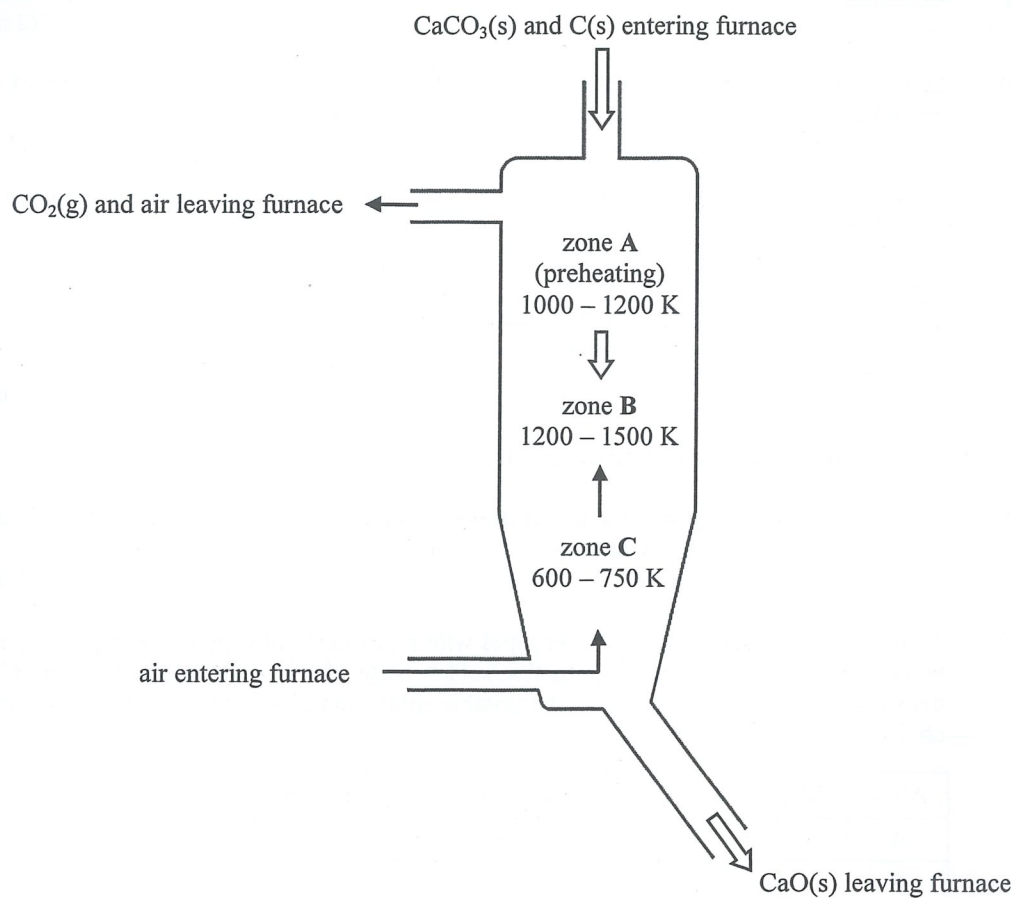
(Formula masses : NaOCl = 74.5, NH₃ = 17.0, H₂O₂ = 34.0, H₂NNH₂ = 32.0, NaCl = 58.5, H₂O = 18.0)

(2 marks)

1. (c) In industry, CaO(s) is produced from the decomposition of CaCO₃(s) :



The diagram below shows an operating furnace for producing CaO(s) in an industrial plant. CaCO₃(s) and C(s) enter the furnace from the top while air enters the furnace near the bottom.



- (i) State one feedstock for CaCO₃(s). (1 mark)
- (ii) Explain why the injection of C(s) and air can result in a higher average temperature in zone B than in zone A. (1 mark)
- (iii) The operation pressure is set at about 1 atm. Give TWO reasons why a higher operation pressure is not preferred. (2 marks)
- (iv) The activation energy of the above decomposition of CaCO₃(s) is 160 kJ mol⁻¹. Calculate the ratio of the rate constant at 1500 K to the rate constant at 1200 K for the decomposition of CaCO₃(s). (Gas constant $R = 8.31 \text{ J K}^{-1} \text{ mol}^{-1}$) (3 marks)
- (v) According to chemical equilibrium, suggest why the decomposition of CaCO₃(s) mainly occurs in zone B. (1 mark)

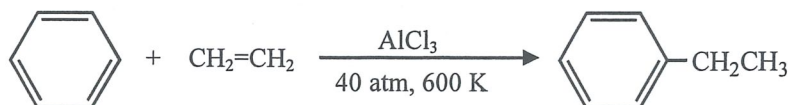
END OF SECTION A

Section B Materials Chemistry

Answer ALL parts of the question.

2. (a) Answer the following short questions :

- (i) From molecular level, explain why cotton (mainly containing cellulose) absorbs water easily. (2 marks)
- (ii) Draw a diagram to show the arrangement of molecules in the nematic phase of liquid crystals. (1 mark)
- (iii) Based on the given information, suggest TWO reasons why the reaction below can be considered as green.



(2 marks)

(b) Iron and copper are metals widely used in daily life.

- (i) Iron crystal has an open structure at room conditions. Name this structure and draw a diagram to represent a unit cell of it. (2 marks)
- (ii) To replace iron-made drinking water pipes with pipes made of copper, the copper pipes may be needed to join together using suitable solder. State which of the alloys A, B and C listed below you would choose to use as the suitable solder and give TWO reasons to support your choice.

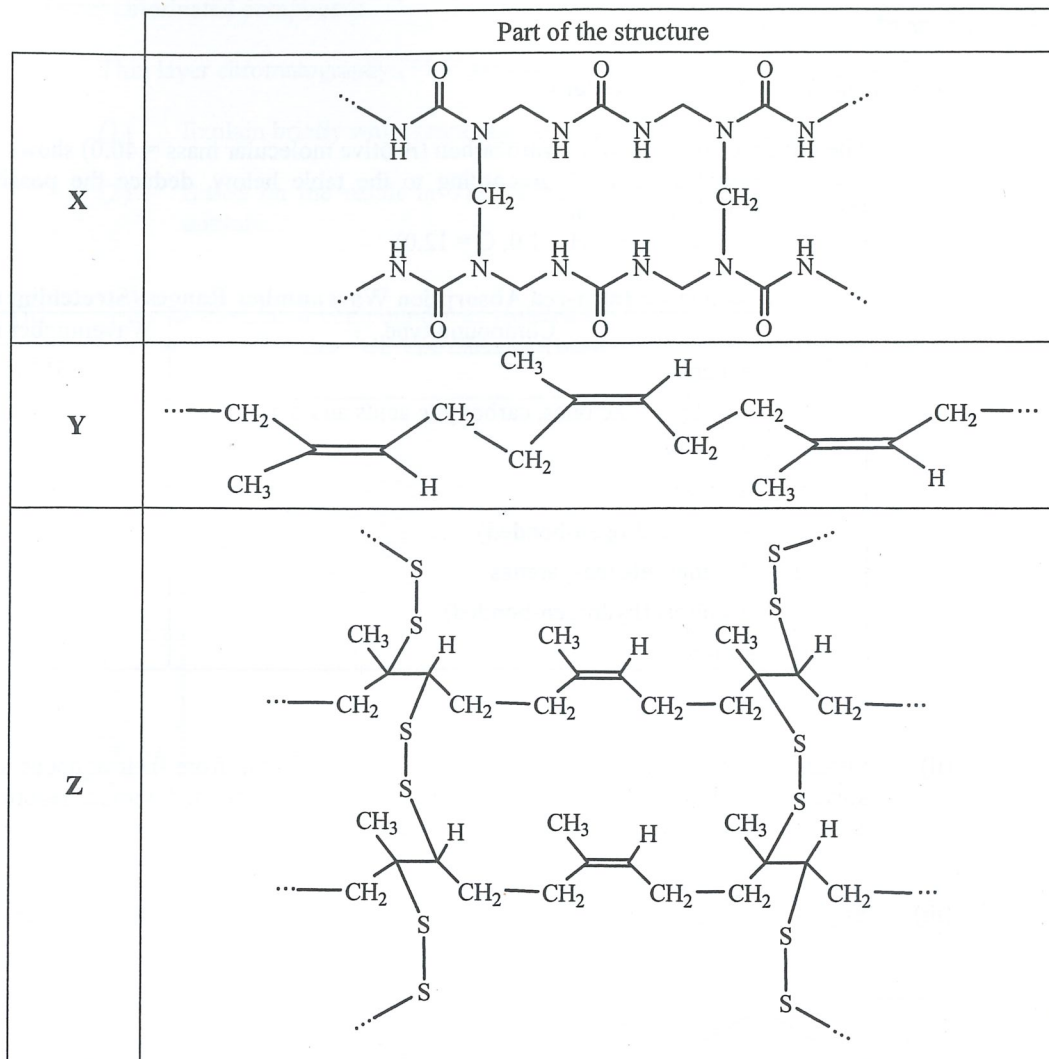
Alloy	Metals contained	Density / g cm ⁻³	Melting point / °C
A	Pb, Sn	8.8	183
B	Ag, Cu, Sn	7.4	217
C	Al, Sn, Ti	4.5	1590

(2 marks)

- (iii) Suggest why water taps are commonly made of brass instead of copper. (1 mark)
- (iv) Iron-made drainage pipes can be replaced with pipes made of polyvinyl chloride (PVC).
- (1) Draw the structural formula of polyvinyl chloride.
- (2) Suggest a moulding method for making PVC pipes.

(2 marks)

2. (c) X, Y and Z are polymeric materials. Part of their structures are shown below :



- (i) X is a thermosetting polymer.
- (1) Draw the structures of the monomers of X.
 - (2) Name the type of polymerisation in the formation of X.
- (3 marks)
- (ii) In industry, heating Y with a substance W gives Z.
- (1) What is W ?
 - (2) Name the process involved.
- (2 marks)
- (iii) Among these three materials, Z is the best in making car tyres.
- (1) By considering their physical properties, suggest a reason why Z is more suitable than X in making car tyres.
 - (2) Explain, from molecular level, why Z is more suitable than Y in making car tyres.
- (3 marks)

END OF SECTION B

Section C Analytical Chemistry

Answer ALL parts of the question.

3. (a) Answer the following short questions :

- (i) The infra-red spectrum of a hydrocarbon (relative molecular mass = 40.0) shows an absorption peak at around 2150 cm^{-1} . According to the table below, deduce the possible structural formula of this hydrocarbon.
(Relative atomic masses : H = 1.0, C = 12.0)

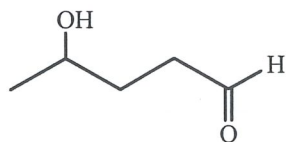
Characteristic Infra-red Absorption Wavenumber Ranges (Stretching modes)		
Bond	Compound type	Wavenumber range / cm^{-1}
C=C	Alkenes	1610 to 1680
C=O	Aldehydes, ketones, carboxylic acids and derivatives	1680 to 1800
C≡C	Alkynes	2070 to 2250
C≡N	Nitriles	2200 to 2280
O-H	Acids (hydrogen-bonded)	2500 to 3300
C-H	Alkanes, alkenes, arenes	2840 to 3095
O-H	Alcohols (hydrogen-bonded)	3230 to 3670
N-H	Amines	3350 to 3500

(2 marks)

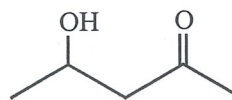
- (ii) Organic compounds can be extracted by suitable solvents from their aqueous solutions. The solvents should dissolve the organic compounds to be extracted without reacting with them. State one other property these solvents should have.

(1 mark)

- (iii) Suggest a chemical test to show how compounds A and B below can be distinguished :



A



B

(2 marks)

- (b) In order to determine the sodium contents (existing as NaCl) in a bacon sample, its Cl^- contents should first be found. 2.0 g of the bacon sample was added to 2.50 cm^3 of 1.0 M $\text{AgNO}_3(\text{aq})$. After that, excess dilute $\text{HNO}_3(\text{aq})$ was added to the mixture obtained. The $\text{AgCl}(\text{s})$ formed was then removed by filtration. The excess $\text{AgNO}_3(\text{aq})$ remaining in the filtrate was then titrated with 0.10 M $\text{KSCN}(\text{aq})$ to give $\text{AgSCN}(\text{s})$ in the presence of a suitable indicator until the end point was reached. All steps were repeated several times and the mean volume of the $\text{KSCN}(\text{aq})$ used to reach the end point was 9.42 cm^3 .

- (i) Why was excess dilute $\text{HNO}_3(\text{aq})$ added to the mixture ?

(1 mark)

- (ii) Draw a diagram for the set-up to be used in the titration, labelling all apparatus and reagents.

(2 marks)

- (iii) Assuming that all Cl^- comes from NaCl in the bacon sample, calculate the percentage by mass of sodium in the bacon sample.

(Relative atomic masses: Na = 23.0, Cl = 35.5, Ag = 107.9)

(4 marks)

3. (c) Chlorine reacted with ethylbenzene (CC1=CC=CC=C1) under sunlight to give a mixture of different chlorinated compounds.

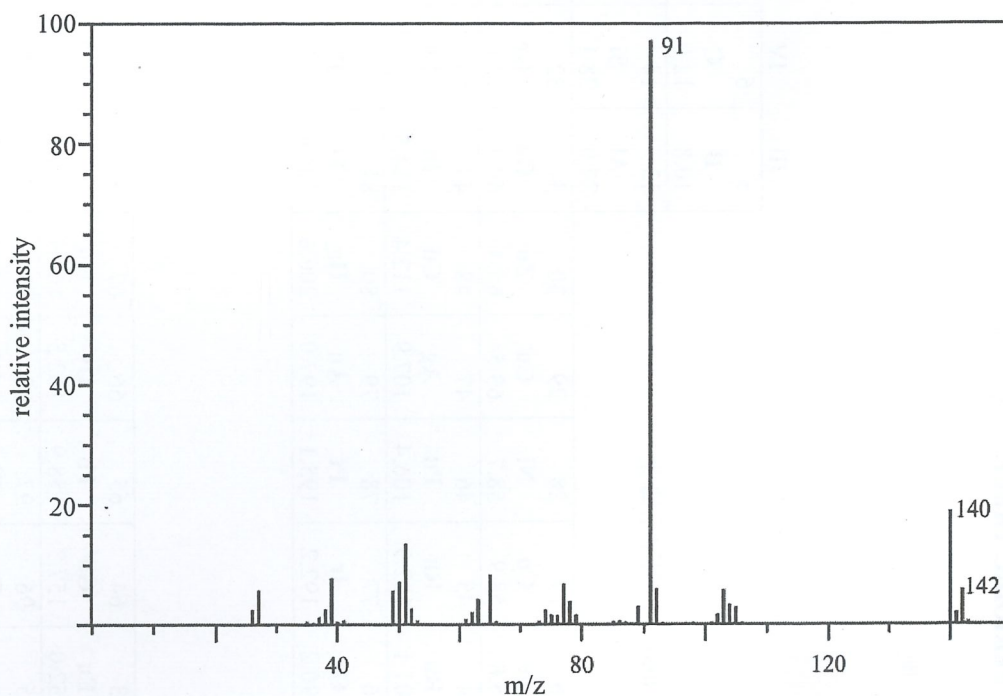
(i) Thin layer chromatography (TLC) was used to separate a small amount of the mixture.

(1) Explain briefly why chromatography can be used to separate a mixture.

(2) Based on the result in TLC, suggest a method to separate a large amount of the mixture.

(3 marks)

(ii) A monochlorinated compound was isolated from the mixture. It is known that chlorine has two isotopes, ^{35}Cl and ^{37}Cl . The mass spectrum of the compound is shown below :



By referring to the labelled peaks, deduce a possible structure of the compound.

(3 marks)

(iii) Pollutants, such as dioxins, can be formed in the manufacturing process of certain chlorine-containing products.

(1) Explain why there is a need to measure dioxin levels.

(2) Suggest why dioxin levels are generally measured using modern instrumentation.

(2 marks)

END OF SECTION C
END OF PAPER

PERIODIC TABLE 周期表

GROUP 族

atomic number 原子序

																		0
																		2
																		He
																		4.0
																		10
																		Ne
																		20.2
																		18
																		Ar
																		40.0
																		36
																		Kr
																		83.8
																		54
																		Xe
																		131.3
																		86
																		Rn
																		(222)
																		(210)
																		At
																		85
																		Po
																		(209)
																		84
																		Pb
																		207.2
																		83
																		Bi
																		209.0
																		82
																		Tl
																		204.4
																		81
																		Hg
																		200.6
																		80
																		89
																		80
																		81
																		82
																		83
																		84
																		85
																		86
																		87
																		88
																		89
																		90
																		91
																		92
																		93
																		94
																		95
																		96
																		97
																		98
																		99
																		100
																		101
																		102
																		103
																		104
																		105
																		106
																		107
																		108
																		109
																		110
																		111
																		112
																		113
																		114
																		115
																		116
																		117
																		118
																		119
																		120
																		121
																		122
																		123
																		124
																		125
																		126
																		127
																		128
																		129
																		130
																		131
																		132
																		133
																		134
																		135
																		136
																		137
																		138
																		139
																		140
																		141
																		142
																		143
																		144
																		145
																		146
																		147
																		148
																		149
																		150
																		151
																		152
																		153
																		154
																		155
																		156
																		157
																		158
																		159
																		160
																		161
																		162
																		163
																		164
																		165
																		166
																		167
																		168
																		169
																		170
																		171
																		172
																		173
																		174
																		175
																		176
																		177
																		178
																		179
																		180
																		181
																		182
																		183
																		184
																		185
																		186
																		187
																		188
																		189
																		190
																		191
																		192
																		193
																		194
																		195
																		196
																		197
																		198
																		199
																		200
																		201
																		202
																		203
																		204
																		205
																		206
																		207
																		208
																		209
																		210
																		211
																		212
																		213
																		214
																		215
																		216
																		217
																		218
																		219
																		220
																		221
																		222
																		223
																		224
																		225
																		226
																		227
																		228
																		229
																		230
																		231
																		232
																		233
																		234
																		235
																		236
																		237
																		238
																		239
																		240
																		241
																		242
																		243
																		244
																		245
																		246
																		247
																		248
																		249
																		250
																		251
																		252
																		253
																		254
																		255
																		256
																		257
																		258
																		259
																		260
																		261
																		262
																		263
																		264
																		265
																		266
																		267
																		268
																		269
																		270
																		271
																		272
																		273
																		274
																		275
																		276
																		277
																		278
																		279
																		280
																		281
																		282
																		283
																		284
																		285
																		286
																		287
																		288
																		289
																		290
																		291
																		292
																		293
																		294
																		295
																		296
																		297
																		298
																		299
																		300

*

**